

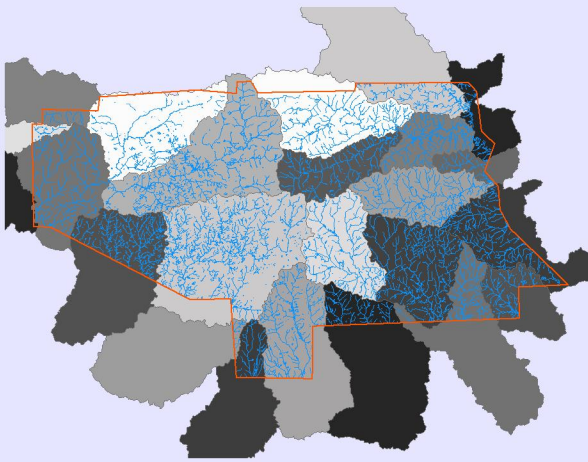


Storm Water Management Program

In May of 2001 the governmental agencies that make up ALOA joined together to address EPA's upcoming Phase II requirements.

This brochure is one of a series of publications regarding stormwater issues in Lee County.

The series is produced by the ALOA Storm Water Advisory Panel and is intended to protect, maintain, and restore the chemical, physical, and biological integrity of local waters in order to enhance the quality of life for our citizens.



Moore's Mill Creek Watershed



Moore's Mill Creek at Moore's Mill Golf Course

Contact Information

For more information regarding your community's storm water program please contact the following agencies:

City of Auburn – Department of Water Resource Management
334-501-3077
www.auburnalabama.org/wrm

Lee County – County Engineer
334-737-7011
www.leeco.us

City of Opelika – Department of Public Works
334-705-5400
www.opelika.org

Auburn University – Risk Management and Safety
334-844-4805
www.auburn.edu/administration/rms/

A Publication Presented by



Moore's Mill Creek Watershed

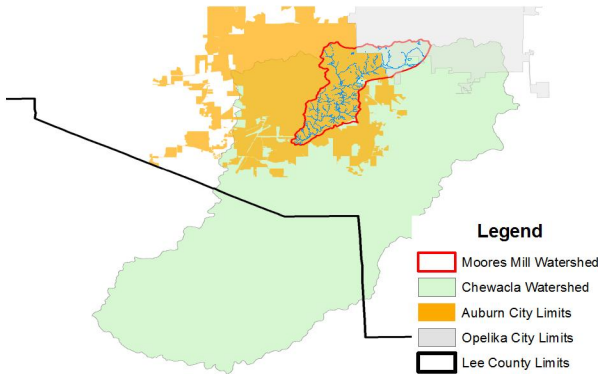


ALOA

“Local Citizen Groups and Governments Working Together for Clean Water”

MOORES MILL CREEK AT A GLANCE:

Moore's Mill Creek is an approximate 6-mile long perennial tributary of Chewacla Creek, a major tributary of Uphappee Creek and subsequently the Tallapoosa River. Moore's Mill Creek originates in south Opelika, thereafter generally flowing southwest through the eastern side of Auburn and into Chewacla Park Lake, and finally discharging to Chewacla Creek. Landuse within much of the Moore's Mill Watershed is heavily urbanized, with a mix of residential, industrial, commercial, and recreational uses accounting for over 35% of the total drainage basin. Current problems associated with urban storm-water runoff, combined with historic impacts from agriculture and development activities, have contributed to increased sediment loads within Moore's Mill Creek and are identified as the likely cause for its placement on the Alabama Department of Environmental Management (ADEM) 303(d) list of impaired waterbodies. As such, ADEM has scheduled to draft a Total Maximum Daily Load (TMDL) for Moore's Mill Creek by 2012. This TMDL would establish legally enforceable regulations for the entire Moore's Mill Creek watershed, thereby determining specific allowable limits of sediment to Moore's Mill Creek and expected reductions for existing discharges. ALOA and its partners are committed to improving water quality, aquatic habitat, and riparian corridors as part of its comprehensive watershed management strategy.

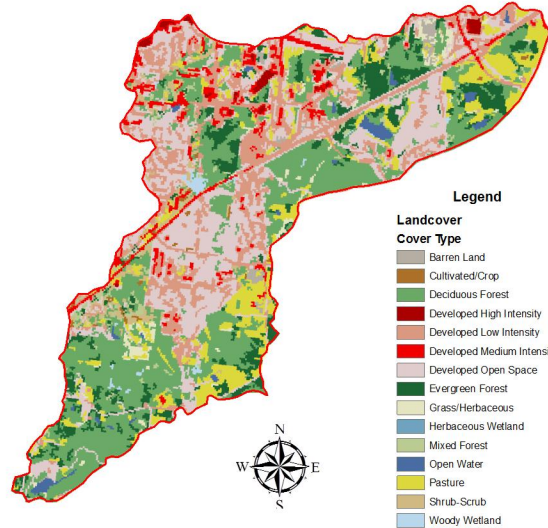


Moore's Mill Creek and Moore's Mill Creek Watershed

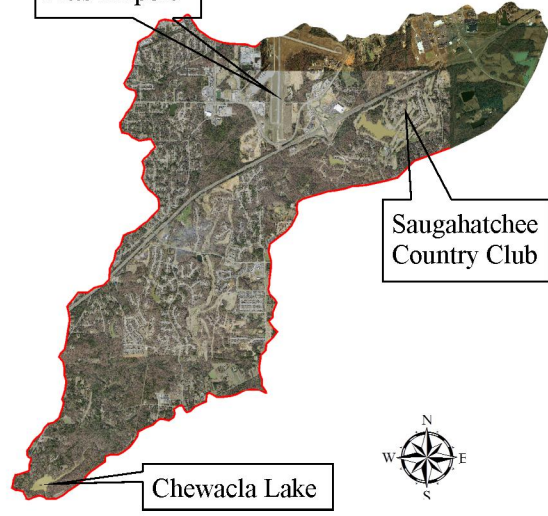
Landuse/Landcover	Sq. Miles	% Coverage
Water	0.12	+/-1
Coniferous Forest	1.04	+/-9
Deciduous Forest	3.45	+/-30
Urban	4.37	+/-38
Ag/Pasture	1.73	+/-15
Open	0.46	+/-4
Ag/Tilled	0.35	+/-3
Sum	11.5	100

2008 Landuse for Moore's Mill Creek Watershed

LANDUSE AND AERIAL PHOTOGRAPH OF MOORE'S MILL WATERSHED



Robert G. Pitts Airport



Chewacla Lake

WHAT'S BEING DONE AND HOW CAN I HELP?

State and local governments and citizen groups alike, have all taken great strides toward protecting the future of Moore's Mill Creek and the Moore's Mill Watershed. Ongoing projects, such as the Moore's Mill Watershed Management Plan and the Moore's Mill Creek Stream Restoration Project, offer opportunities for improving the chemical, biological, and ecological functions necessary for a healthy aquatic ecosystem. Additionally, partnerships such as ALOA and the newly formed Lee County Business Partners for Clean Water are working together to develop solutions that will allow future generations to enjoy the benefits offered by healthy water resources. In addition to providing on-the-ground projects, both ALOA and Lee County Business Partners for Clean Water perform numerous education and outreach initiatives to inform local citizens about ongoing concerns and ways in which they may become involved in a solution. If you are interested in getting involved with any of these programs or would simply like additional information, please visit any one of the websites listed below or contact the City of Auburn Water Resource Management Department at (334) 501-3077.



Moore's Mill Creek Stream Restoration Work



Lee County Business Partners for Clean Water

FOR MORE INFORMATION ON HOW TO GET INVOLVED VISIT ANY OF THESE ORGANIZATIONS:

- WWW.AUBURNALABAMA.ORG/WRM
- [HTTP://WWW.ACES.EDU/DEPT/FISHERIES/AWW/SWAMP/](http://WWW.ACES.EDU/DEPT/FISHERIES/AWW/SWAMP/)
- [HTTP://WWW.ACES.EDU/DEPT/FISHERIES/AWW/AWW](http://WWW.ACES.EDU/DEPT/FISHERIES/AWW/AWW)
- WWW.CLEANWATERPARTNERSHIP.ORG/OLD
- WWW.LEE.AL.NACDNET.ORG
- WWW.ADEM.STATE.AL.US/WATERDIVISION